

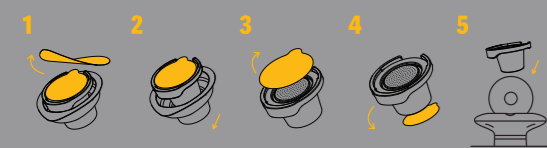
WELCOME TO THE REVOLUTION

Before you begin exploring our unique worlds, please remember to follow these important steps prior to dropping a pod:

CHECK IF YOUR PODS HAVE SEALS

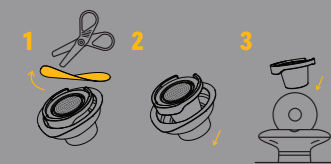
PODS WITH SEALS

1. Peel off the packaging seal.
2. Take out the pod from its packaging.
3. Remove the **top** seal.
4. Remove the **bottom** seal.
5. Drop a pod in your OOKA and enjoy your session.



PODS WITHOUT SEALS

1. Cut to open the pod packaging.
2. Take out the pod from its packaging.
3. Drop a pod in your OOKA and enjoy your session.



Scan to discover flavors, moods, accessories and much more!



FINISHING & CLEANING

8. FINISHING YOUR SESSION

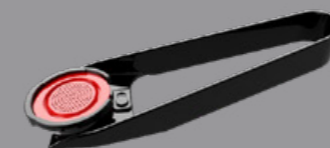
- OOKA automatically switches off at the end of a session.
- Alternatively, you can end your session by pressing and holding the power button until its light goes off.
- A descending beep and the Portal ring flashing red indicate the end.



Watch our videos to bring your OOKA experience to life.

9. REMOVING THE POD

- Immediately after your session use the tongs to remove the used pod and dispose of it carefully.
- When you open the Portal lid, OOKA will beep and flash red to warn you of hot surfaces.



10. CLEANING YOUR OOKA

- Wait for OOKA cool (and stop flashing red).
- Wipe the Portal with a dry cloth.
- Remove the lid seal (A), rinse, dry it and reattach.
- Remove the water tank and rinse it.
- Remove the hose and rinse it.
- Use the brush and clean the OOKA device body (without the tank).
- Dry all parts before assembling and storing.



*Take extra care. OOKA is not waterproof.

AIR2021-0016-04

GET
READY
TO
ENJOY!

ONE PORTAL.
MANY WORLDS.
OOKA

THIS IS A GUIDE FOR FIRST-TIME USERS OF OOKA.

1. CHARGE YOUR OOKA

- Before using the device, please charge it for at least 3-4 hours with the power supply unit provided.
- For safety, OOKA is shipped in "travel mode". Refer to the User Manual to find out more.

2. FILL WITH WATER

- Slide the tank release button and lift the device body.
- Add water to the fill line indicated.

3. CONNECT THE HOSE

- Position the hose as indicated below and insert it until you hear a click.

4. DROP A POD

- Check if your pod has seals. Remove both the top and bottom ring seals (if any).
- DO NOT remove the pod ring (A).
- Press the (B) open button to open the (C) Portal lid, insert the pod with the (D) pod ring tab facing 9 o'clock and close it.

5. POWER UP

- Press the (E) power button once to activate the device. Press again and hold until the (F) outer ring is fully lit and there is a beep.

6. READY

- An ascending beep and the Portal ring in solid amber indicate your session is ready.

7. ENJOY!

- Twist the air flow adjuster to alter the draw pressure. Sit back and enjoy your session. The cloud and taste will build over time.

